



WHEEL LOADER
ER412T

 Rated Load | 1200kg

 Rated Power | 36.8kW

 Net Weight | 4000kg

ER412T



 Tel: +86-532-80997859

 Website: www.everun.com

 Instagram: [everunmachinery](https://www.instagram.com/everunmachinery)

 Fax: +86-532-80993178

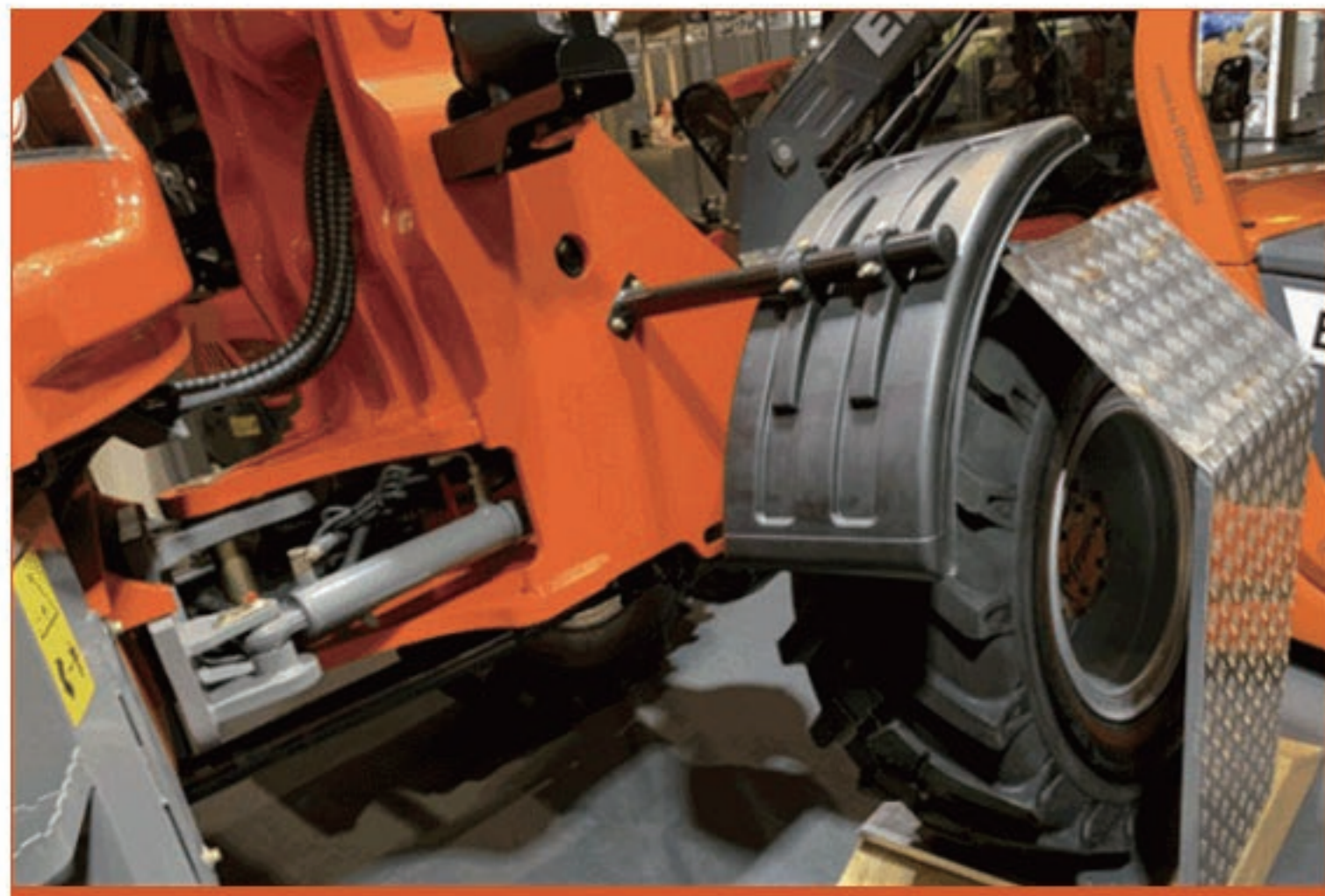
 Facebook: [everunmachinery](https://www.facebook.com/everunmachinery)

 LinkedIn: [Qindao Everun Machinery Co., Ltd](https://www.linkedin.com/company/qindao-everun-machinery-co-ltd)

 Email: info@everun.com

 Youtube: [everunmachinery](https://www.youtube.com/everunmachinery)

ER412T | WHEEL LOADER



• Everun articulated oscillating floating joint



• Standard wider 20.5/70-16 tires



• One bigger and stronger lift cylinderA



• Streamline designed engine hood & iron Casting rear bumper



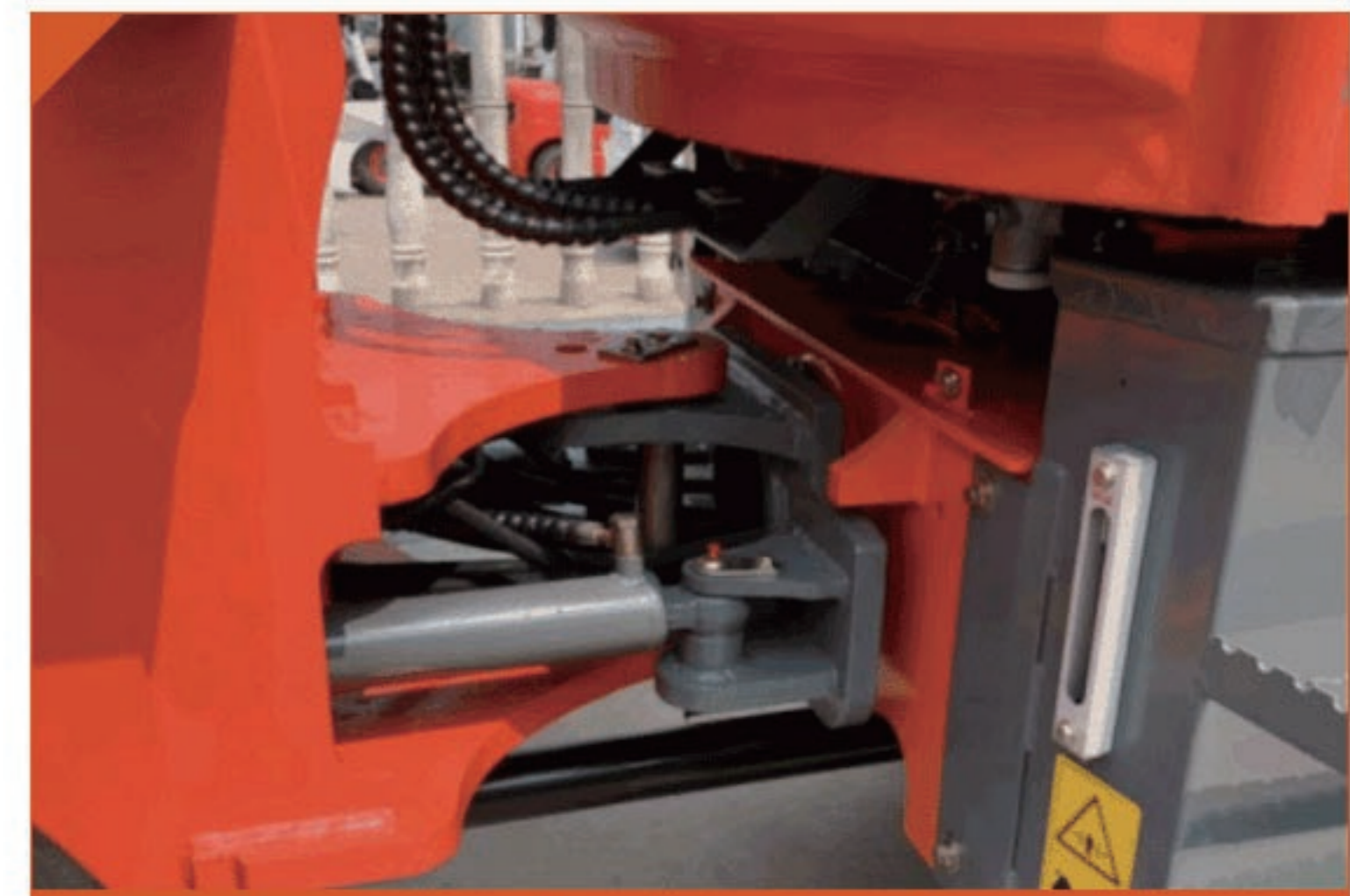
• Easily accessible lubrication points



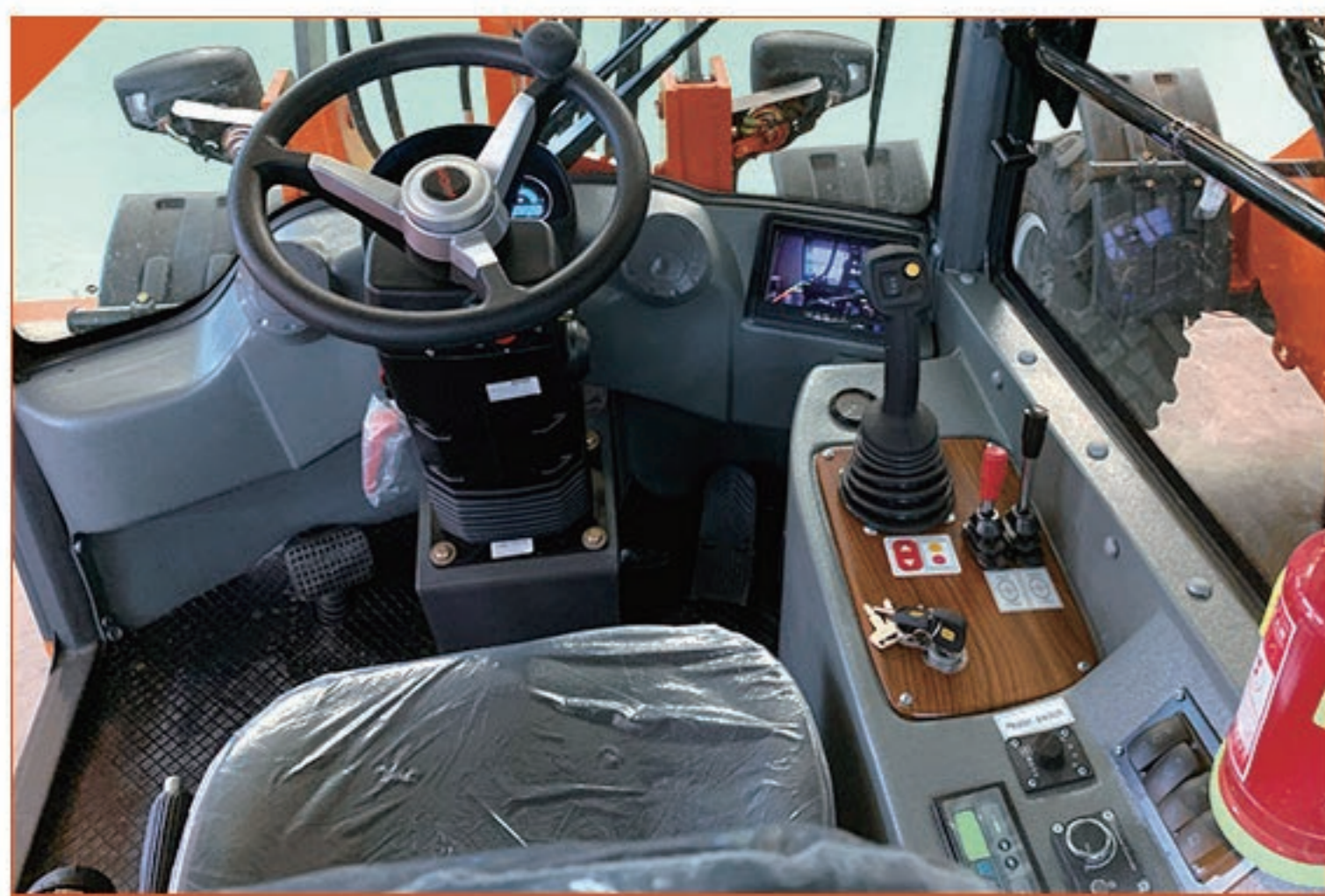
• Short hydraulic hose lengths



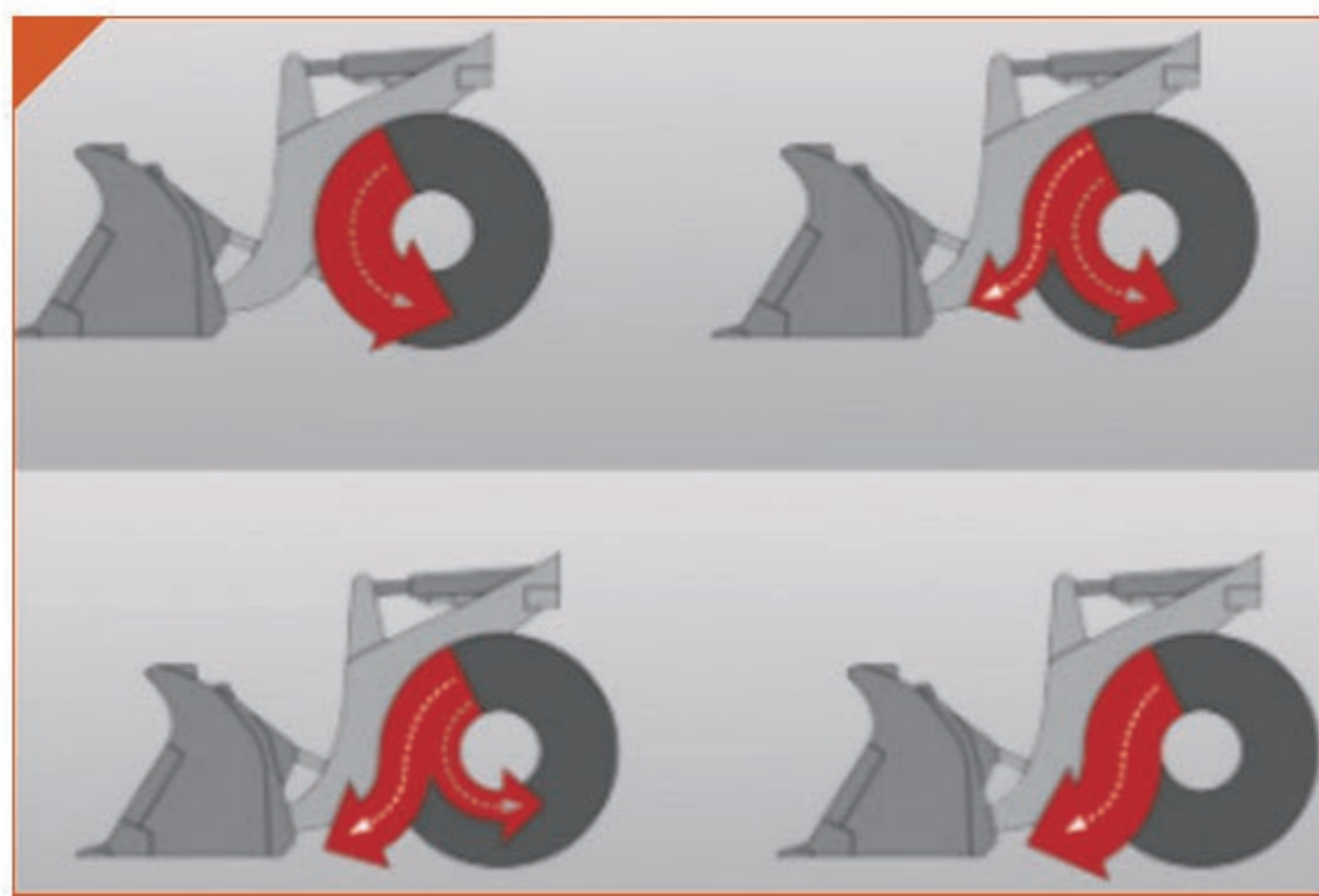
• ROPS & FOPS cabin with maintenance port



• Vibration-damped working area



• Ergonomic joystick



• Brake pedal & torque converter transmission system



• Large selection of attachments



• Large selection of tyres

Everun ER412T Wheel Loader is with 1.2ton loading capacity, it can install Euro5 or EPA4 engine to meet different emission requirements. New Rops & Fops Cabin provides a better job sight. Floating oscillating articulation is more flexible in off road, it will protect the frame to extend the working life. Engine hood with new material will make engine has a better dissipation, and cast iron rear counterweight make whole wheel loader more stable when working.

Specifications

Engine Details

Model	C490BPG Engine (Euroiii and EPA Certificate)
Engine Type	In-line Arrangement,Water-cooled,Four-cycle Diesel Engine
Rated Power	36.8kW
Rated Speed	2650 r/min(rpm)
Min Fuel-consume Ratio	≤230g/kW.h

Bucket

Bucket Capacity	0.53m ³
Bucket Width	1740mm
Bucket Type	Heavy-duty Bolt On Teeth
Rated Load	1200kg

Brake System

Service Brake	Four Wheel Hydraulic Spread-shoed Brake
Parking Brake	Hand Operated

Tyre

Type Specification	20.5/70-16
--------------------	------------

Operating Specifications

Steering System	Articulated Frame With Hydraulic Power Steering
Minimum Turning Radius	4389mm
Driving System	Hydraulic Converter
Net Weight	4000kg

Overall Dimensions

Overall Length (bucket on ground)	5234mm
Dumping Height	2487mm
Overall Width	1850mm
Ground To Cab Top	2535mm
Dumping Reach	858mm
Min.Base To The Ground	443mm

Transmission System

Type	Fixed-spindle Power Shift
Shift Gear Control Oil Pressure	1.2-1.5 MPa
Rated Input Speed	2650(rpm)