



WHEEL LOADER  
**ER425T**

 Rated Load | 2500kg

 Rated Power | 70kW

 Net Weight | 5500kg

**ER425T**



 Tel: +86-532-80997859

 Website: [www.everun.com](http://www.everun.com)

 Instagram: [everunmachinery](https://www.instagram.com/everunmachinery)

 Fax: +86-532-80993178

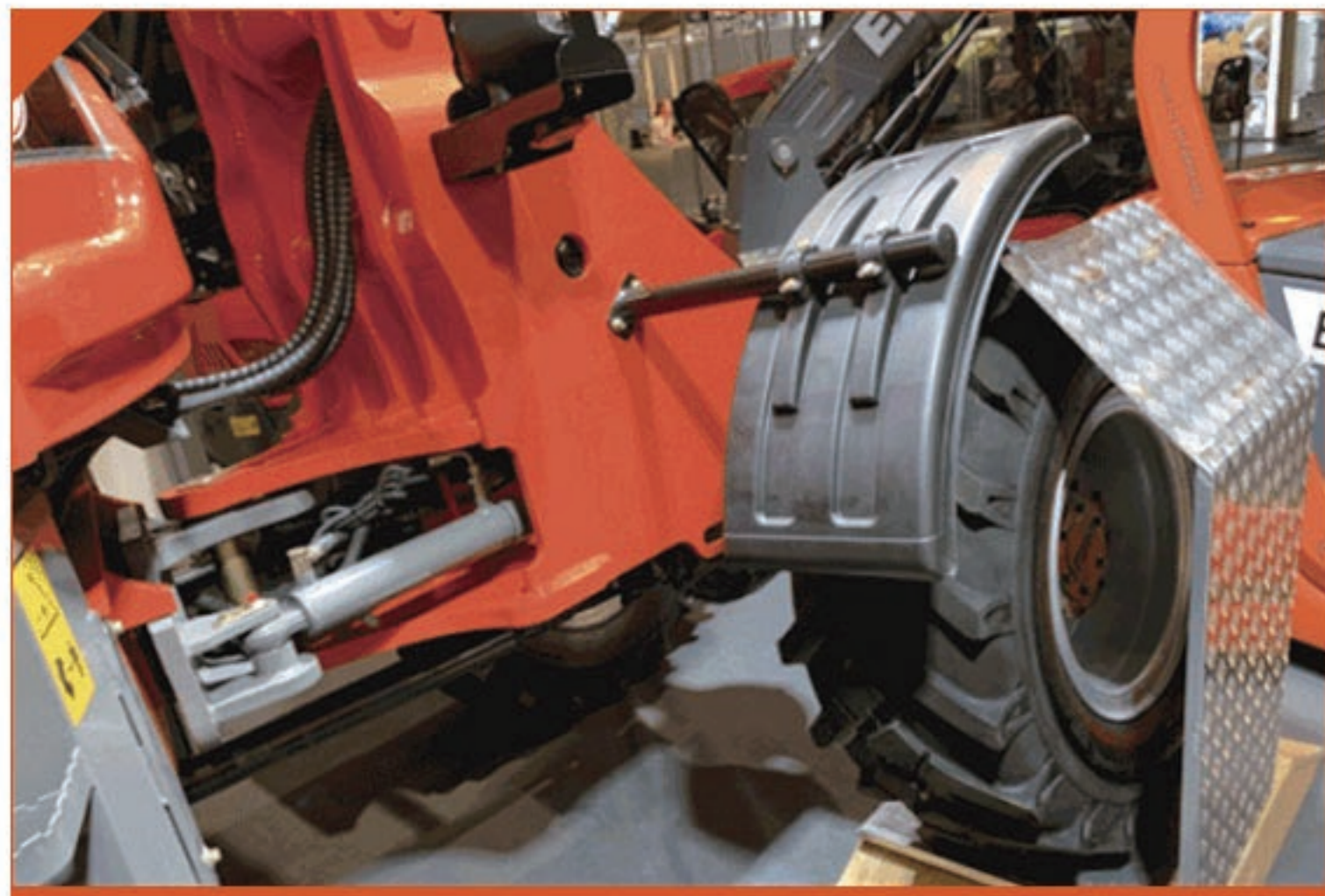
 Facebook: [everunmachinery](https://www.facebook.com/everunmachinery)

 LinkedIn: [Qindao Everun Machinery Co., Ltd](https://www.linkedin.com/company/qindao-everun-machinery-co-ltd)

 Email: [info@everun.com](mailto:info@everun.com)

 Youtube: [everunmachinery](https://www.youtube.com/everunmachinery)

# ER425T | WHEEL LOADER



• Everun articulated oscillating floating joint



• Standard wider 16/70-20 tires



• Bigger and stronger lifting cylinders



• Streamline designed engine hood & iron Casting rear bumper



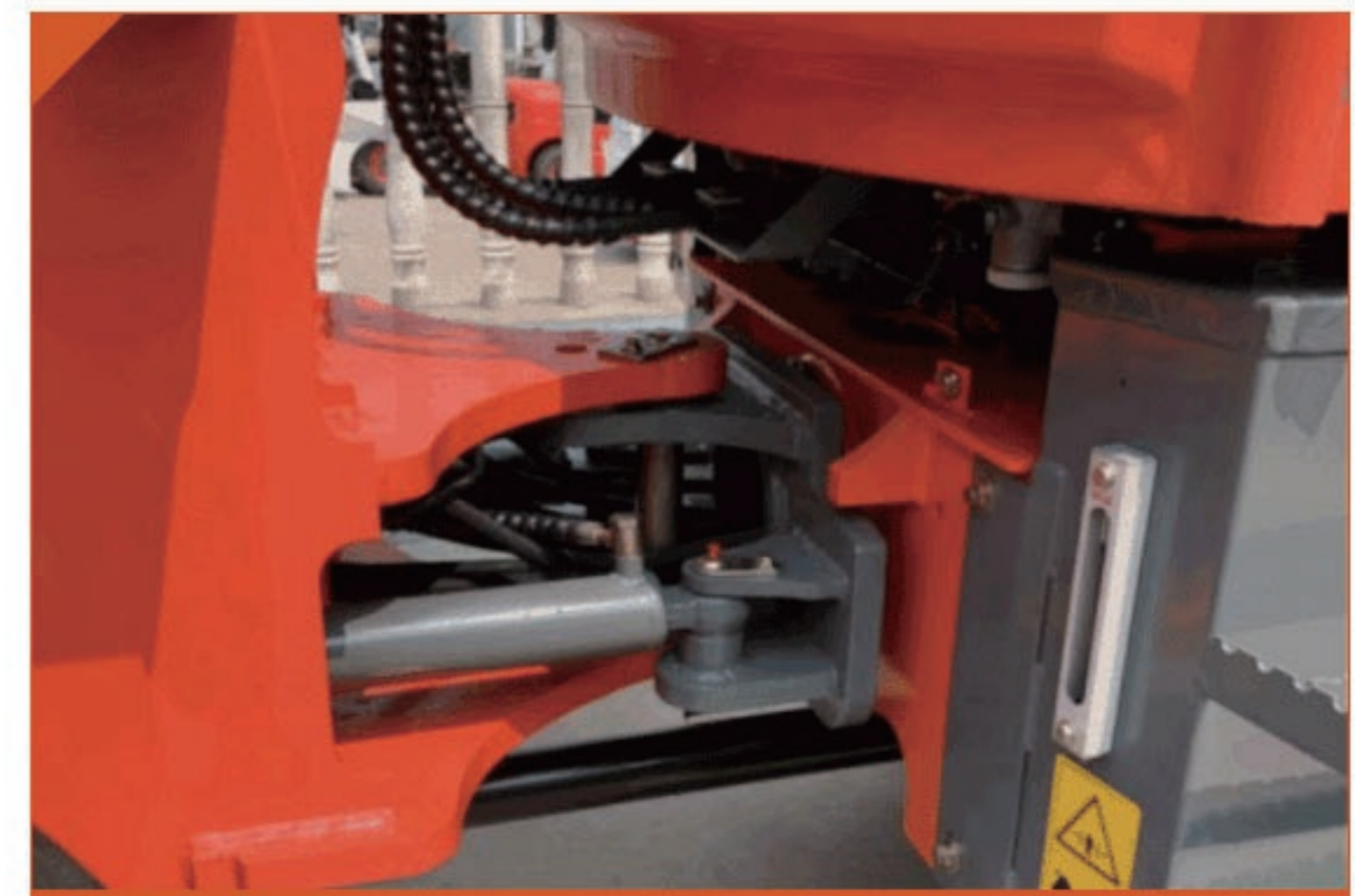
• Easily accessible lubrication points



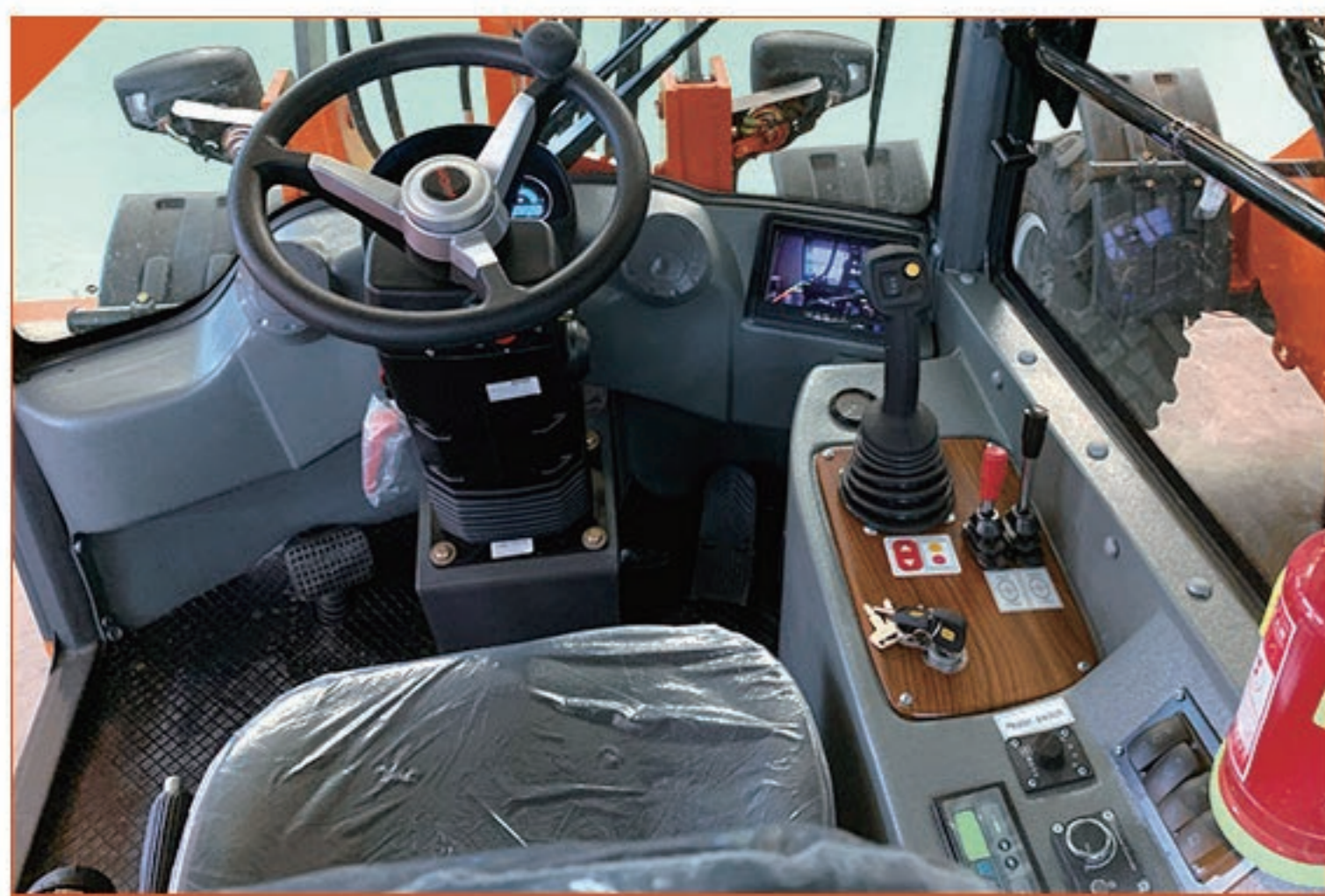
• Short hydraulic hose lengths



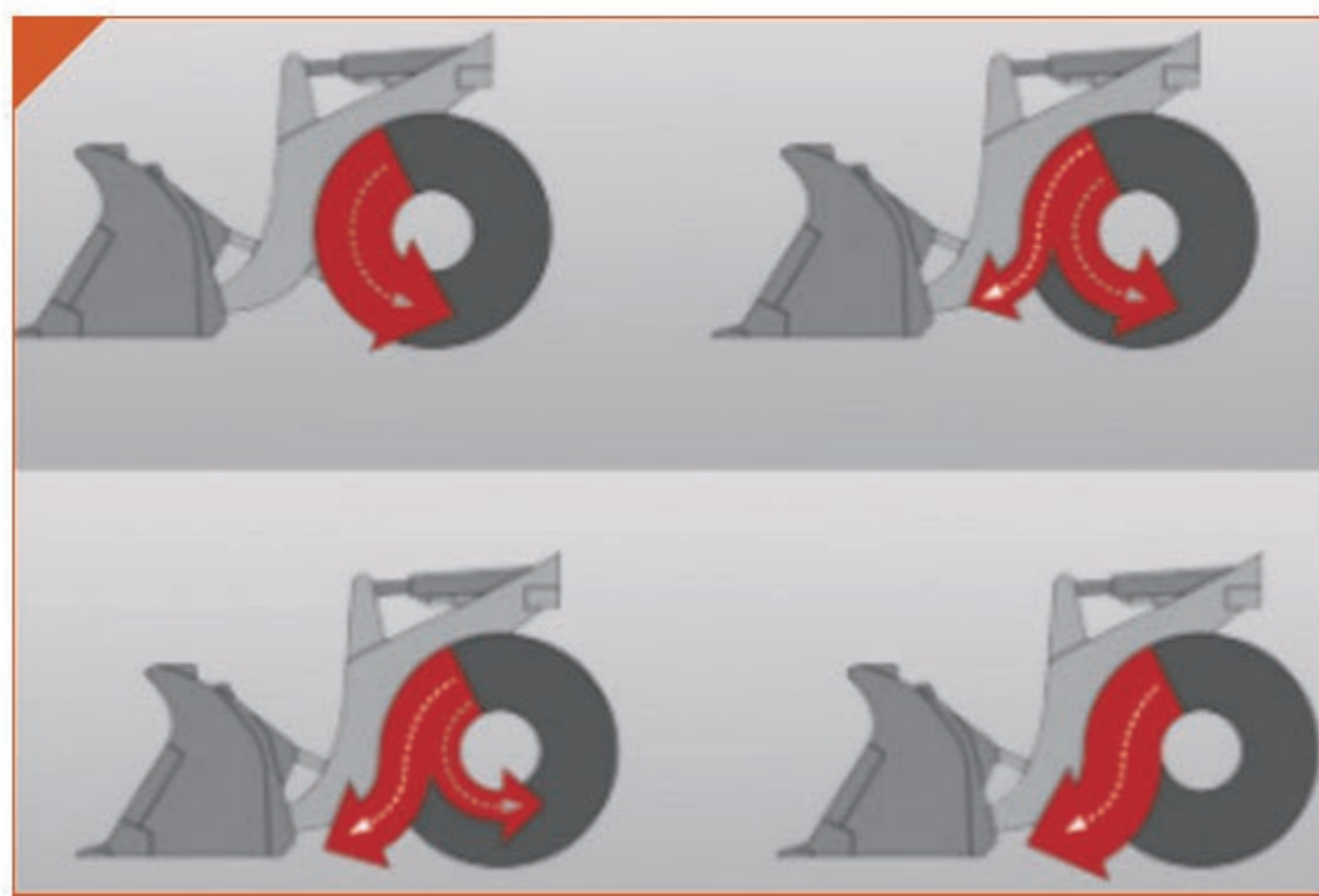
• ROPS & FOPS cabin with maintenance port



• Vibration-damped working area



• Ergonomic joystick



• Brake pedal & torque converter transmission system



• Large selection of attachments



• Large selection of tyres

Heavy duty articulation, adapt oscillating floating function, it can work well especially in terrain. Suit for both construction and agricultural environment. Lift-up engine hood, easy to check and for maintenance. Iron powder rear bumper, make the machine more stable. Battery at two sides of the rear bumper, easy for charging. Streamlined and modern design, meet the preferences of contemporary customers.

## Specifications

### Engine Details

Model	Xichai 4DX22-96 Engine
Engine Type	In-line Arrangement, Water-cooled, Four-cycle Diesel Engine
Rated Power	70kW
Rated Speed	2400 r/min(rpm)
Max Torque	330N.m

### Bucket

Bucket Capacity	0.72m <sup>3</sup>
Bucket Type	Heavy-duty Bolt On Teeth
Rated Load	2500kg

### Transmission System

Hydraulic Torque Converter		
Model	280	
Gear Box	Mode	Fixed-spindle
	Shift	F2/R2
	Shift Gear Control Oil Pressure	1.3±0.2

### Operating Specifications

Steering System	Articulated Frame With Hydraulic Power Steering
Minimum Turning Radius	5460mm
Driving System	Hydraulic Converter
Net Weight	5500kg

### Overall Dimensions

Overall Length (bucket on ground)	5710mm
Overall Height	2800mm
Overall Width	2040mm

### Brake System

Service Brake	Four Wheel Hydraulic Spread-shoed Brake
Parking Brake	Hand Operated

### Tyre

Type Specification	16/70-20
--------------------	----------